

# FEARS AT BROWN COW BRIDGE

# IN WAITING?

said: "The Kirklees Council Minerals Section consulted with both Oldham and Calderdale Councils at the time of the application to extract mineral from Moselden Quarry.

"There was a need to co-ordinate the opening of Moselden Quarry with the closure of Clockface since for a time the processing plant was to be located at Clockface Quarry and when it transferred to Moselden further mineral would be extracted from Clockface Quarry.

"Neither Oldham nor Calderdale objected to the application. It was anticipated therefore that there would be movement of rock between the two quarries. There is a condition requiring wagons to be sheeted to prevent material falling onto the highway."

Permission for quarrying at Moselden was granted in July 1995 and runs out at the end of 2015.

She added: "A recent complaint has been received from a resident of Barkisland concerning the deposit of mud and debris onto the public highway by lorries leaving both Moselden Quarry and Clockface Quarry.

"Officers from Kirklees Planning Services have liaised with officers in Calderdale to ascertain if the problem has been an ongoing issue.

"The response from Calderdale indicated that initially there had been concerns regarding mud on the road at Clockface but that new and more substantial wheel cleaning facilities had now been installed.

"Kirklees officers have spoken with the current operators of the site, PMW Minerals, who carry out crushing works on behalf of Marshalls and it has been reported there have been isolated incidents involving the spillage of aggregate, but that this took place on a bend adjacent to Ringstone Reservoir and not on the bridge over the M62."

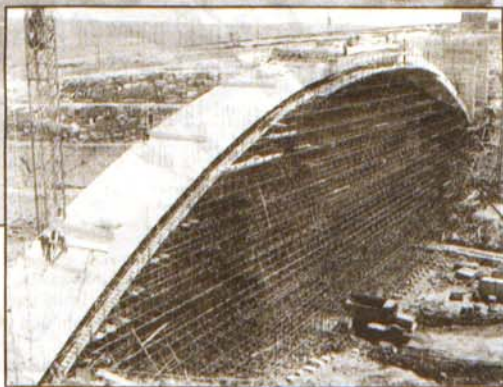
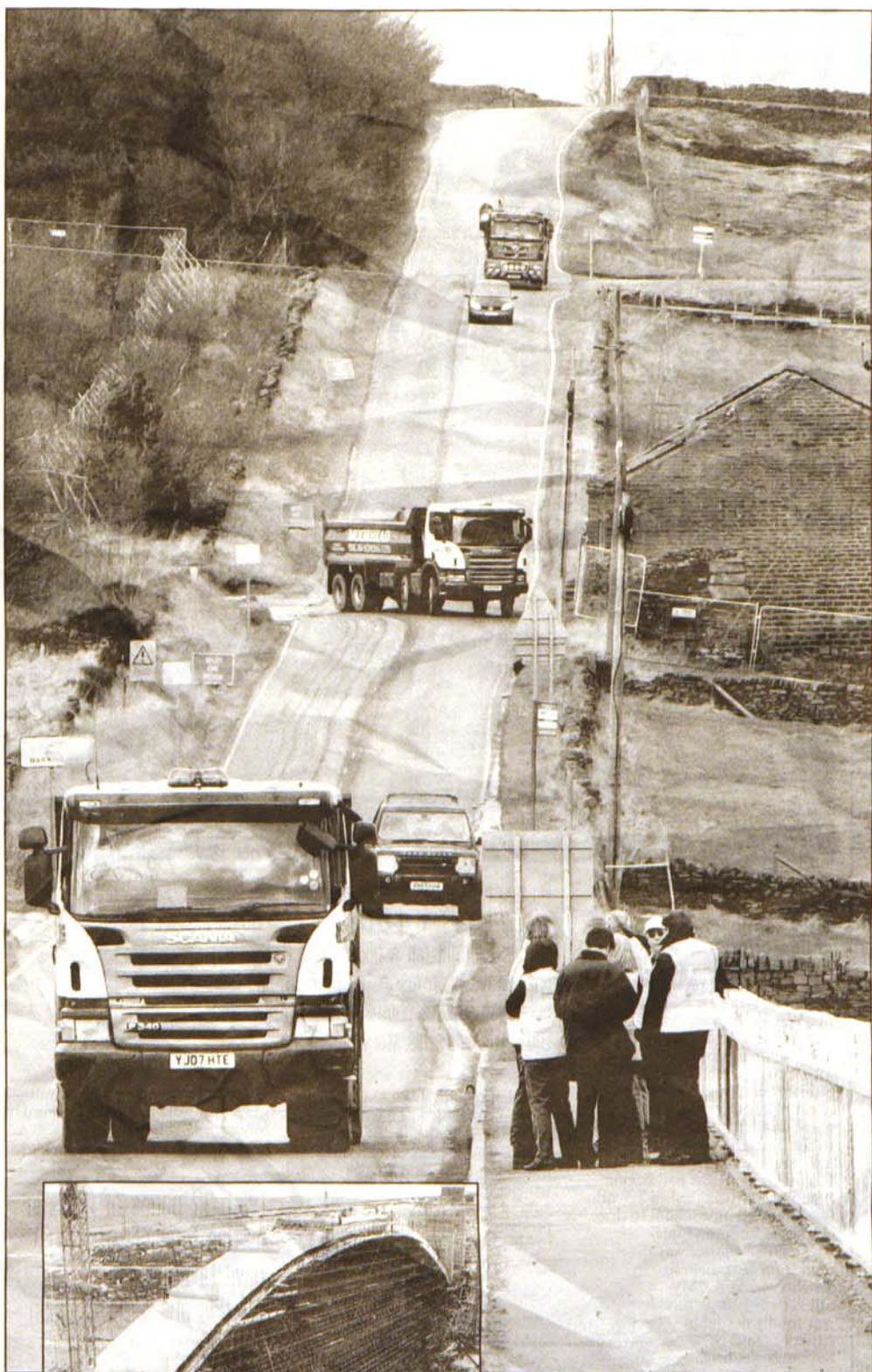
She added that Kirklees Planning Officers met a representative of Marshalls on Wednesday afternoon to discuss various planning issues including wheel cleaning provision at Moselden Quarry and the sheeting of lorries leaving the site.

Marshalls commercial manager Diane Kay said: "Moselden Quarry is owned by Marshalls and is currently being operated on our behalf by a contractor. There should be around 40 lorry loads of aggregate sold out of the quarry per day along with a small amount of shale being transported to the Clockface Quarry.

"All vehicles are fully sheeted and checked prior to leaving the site to avoid any spillage of materials."

She added: "Marshalls remain committed to ensuring the safety of the local community and operates at all times in a responsible manner. Where Marshalls vehicles are used, strict safety procedures are adhered to with vehicles adequately covered to remove the possibility of falling debris.

"As with all Marshalls sites, health and safety are of paramount importance and we will do all we can to work with the local community and residents to ensure any Marshalls operations have minimal impact on surrounding areas."



■ **CONCERN:** Local residents protesting about quarry work, Scammonden Bridge, near Brown Cow Pub and, left, the bridge under construction in 1969